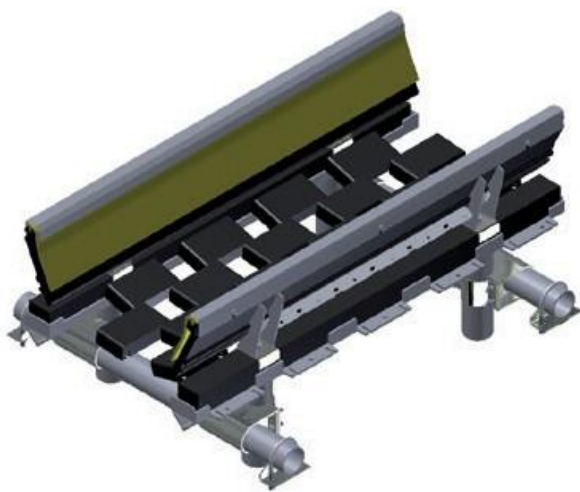




# SPARGAMAT EX



## PRODUCT FEATURES

- The SPARGAMAT EX offers three degrees of freedom :
  - the flexibility of the belt (due to its position relative to the damping blocks)
  - the chains' vertical movement when material falls on the blocks
  - the flexibility of the lateral rubber absorbers placed under the chains
- Available in standard lengths of 1200, 1500 and 1800mm and in three different versions for varying lump sizes (up to 500mm / 20 in.)  
For larger lump sizes, consult with us.

## DYNAMIC IMPACT CRADLE WITH SEALING PANELS

- The SPARGAMAT EX is an impact cradle mounted on shock-absorbing blocks. It eliminates the needs for idlers and skirt boards and offers excellent sealing capacities at loading points.
- It increases the lifespan of the belt, which is maintained between the sealing panels and the Polyspar inside seal plate.

The SPARGAMAT EX :

- eliminates nip points at loading zones
- eliminates the need for metal skirt boards
- improves belt tracking

Thanks to the SPARGAMAT EX chain system, adjustments can be made easily, quickly and precisely.

For cases where belt tracking is difficult, such as with reversing belts, the SPARGAMAT EX is available in auto-centering AC model.



# R. BRUNONE

CONTAINMENT • OPTIMISATION • SAFETY OF CONVEYORS

1, rue de la Cressonnière  
27950 Saint-Marcel, France  
Tél.: +33 (0)2 32 64 20 20  
E-mail: commercial.brunone@brunone.fr